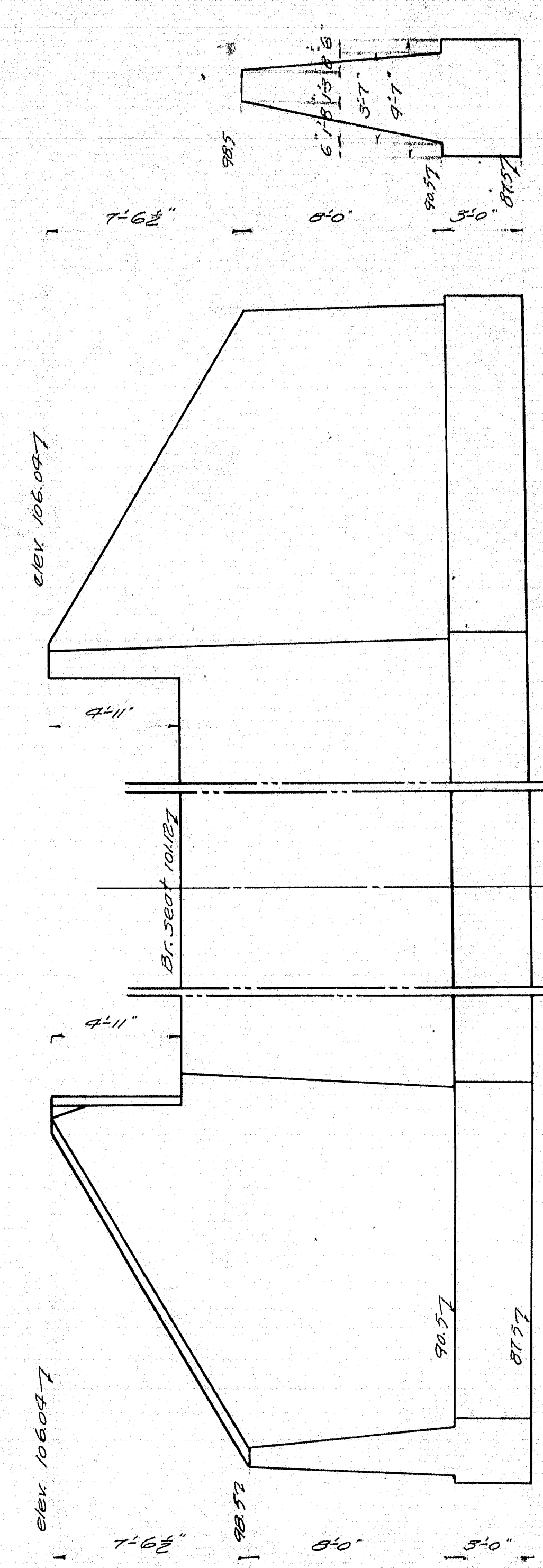
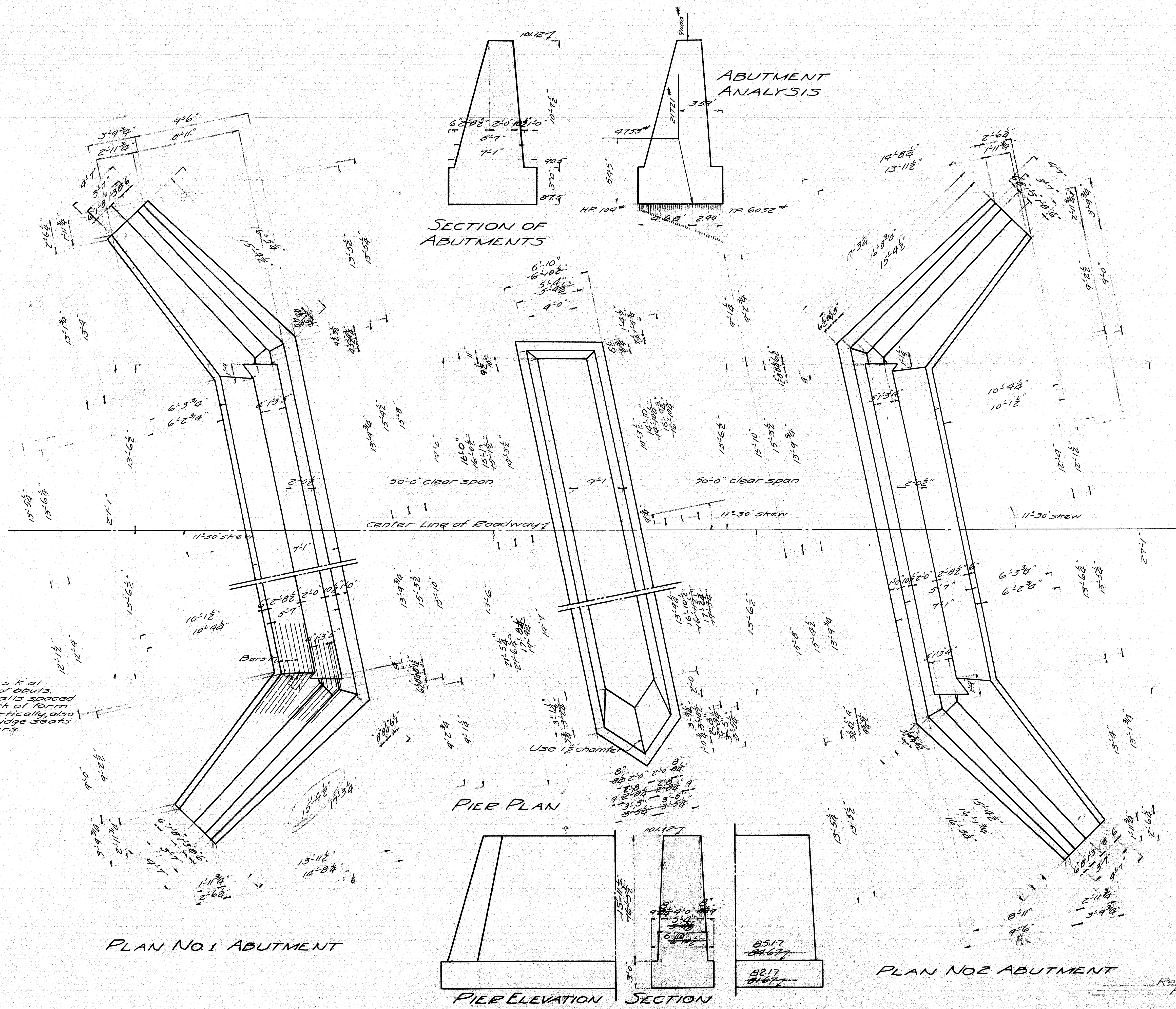


MAINE HIGHWAY COMM.
BRIDGE DIV.
BEAR RIVER BRIDGE
IN THE TOWN OF
NEWRY OXFORD CO.
SURVEY PLAN
SHEET 1 OF 3 AUGUSTA, ME JAN. 21, 1929

11-101

0 1 2 3 4 5 INCHES



MAINE HIGHWAY COMMISSION
BRIDGE DIVISION

**BEAR RIVER
BRIDGE**

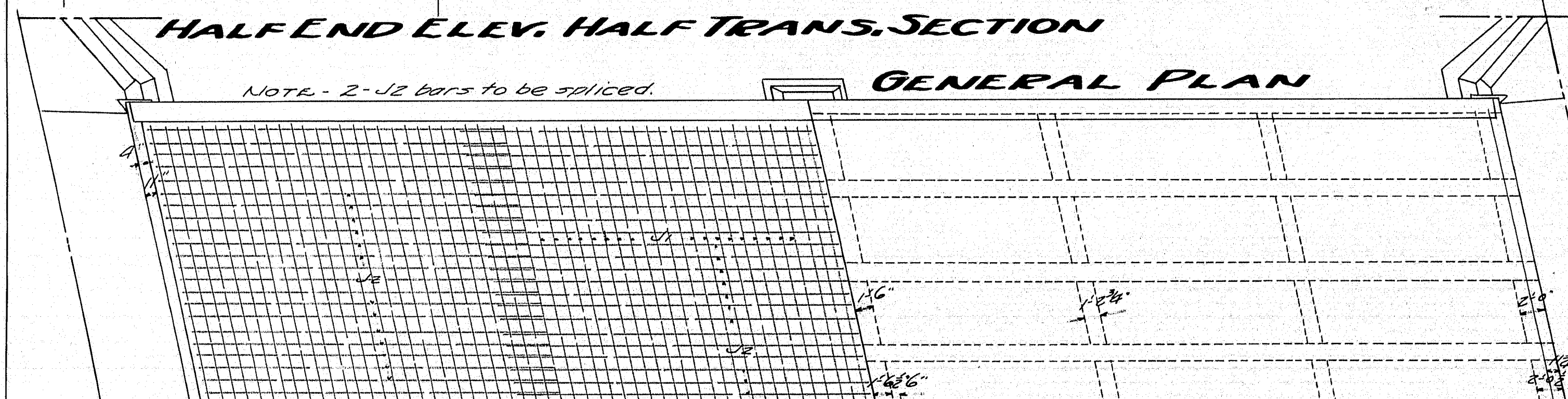
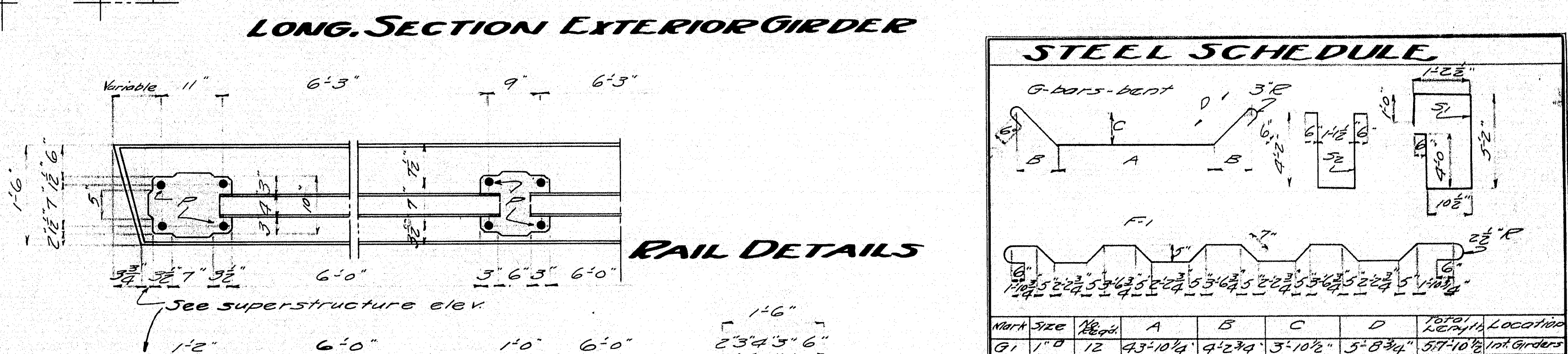
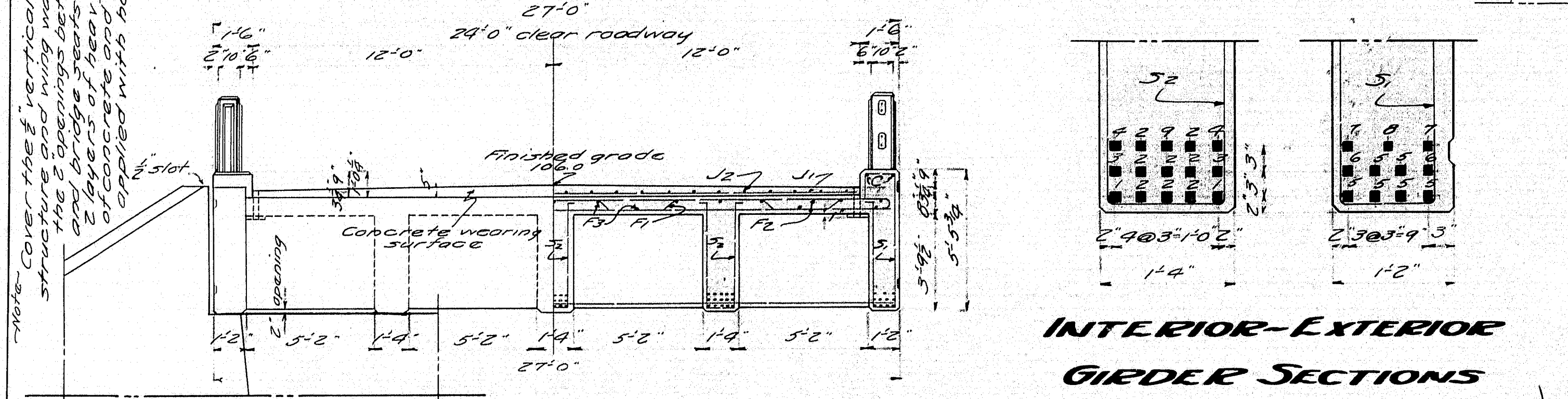
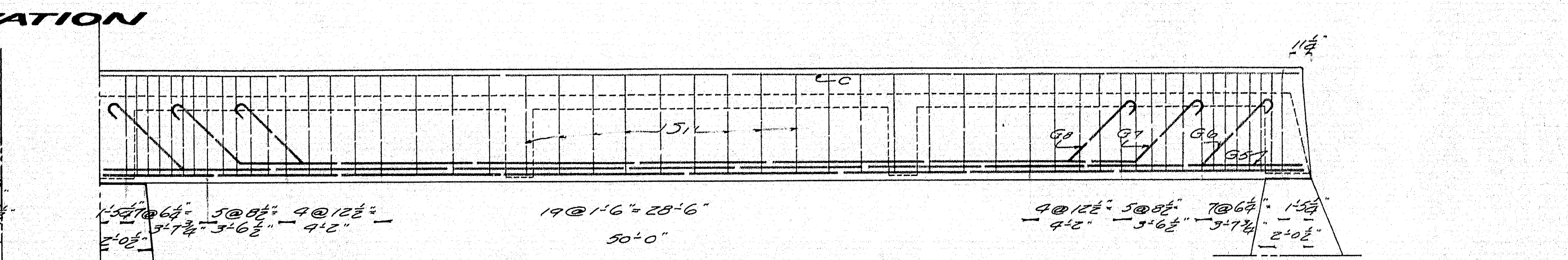
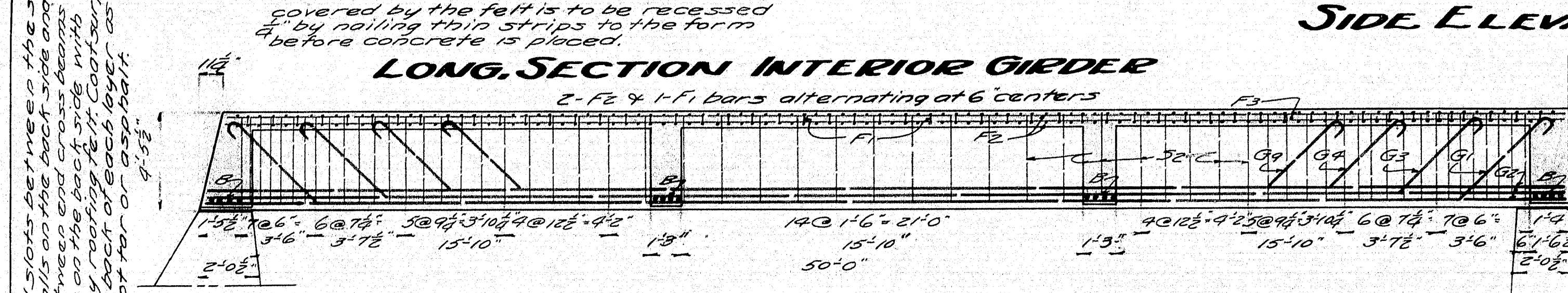
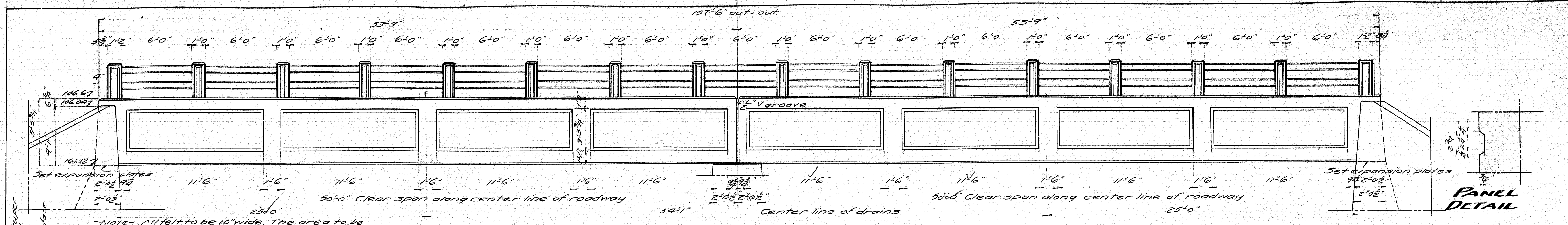
IN THE TOWN OF
NEWRY

OXFORD COUNTY

SUBSTRUCTURE

Sheet 2 of 3 August 16, Mar. 16, 29

Revised as built
Feb. 10, 1930
E.E.B.

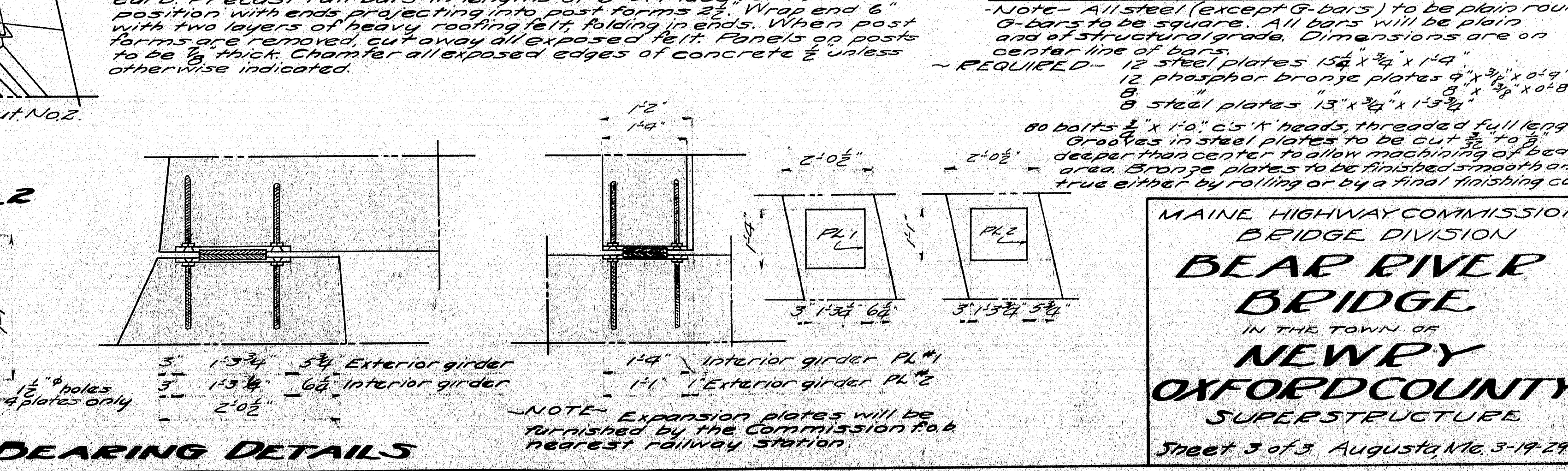
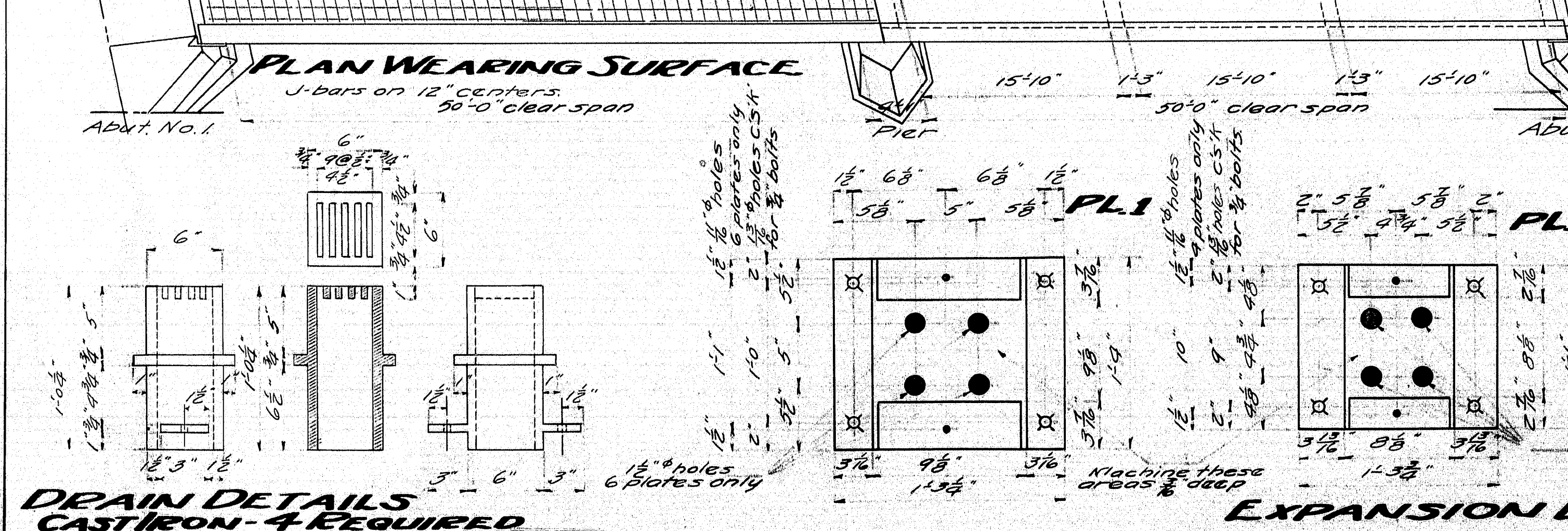


STEEL SCHEDULE

Mark	Size	No.	Length	Location
G1	1" x 12"	12	43'-10 1/4"	Interior girders
G3	1" x 12"	12	33'-4 3/4"	Interior girders
G4	1" x 12"	12	27'-4 3/4"	Interior girders
G6	1" x 12"	8	44'-4 3/4"	Interior girders
G7	1" x 12"	8	36'-4 3/4"	Interior girders
G8	1" x 12"	8	28'-1 1/4"	Interior girders
G9	1" x 12"	6	19'-10 3/4"	Interior girders
G2	1" x 12"	48	53'-7"	Exterior girders
G5	1" x 12"	24	63'-7"	Exterior girders
F1	3/8" x 10"	104	30'-4 1/2"	Slab
F2	3/8" x 10"	212	27'-2"	Slab
F3	3/8" x 10"	38	52'-10"	Slab
C	1/2" x 8"	8	53'-6"	Curbs
U	3/8" x 10"	106	24'-1"	Wearing surface
J2	3/8" x 10"	96	27'-1"	Posts
E	3/8" x 10"	240	6'-0"	Ends
K	3/8" x 10"	32	9'-0"	Abut. & Wings
S1	3/8" x 10"	208	12'-9"	Ext. Girders
S2	3/8" x 10"	354	10'-5 1/2"	Int. Girders
B	1" x 12"	32	27'-0"	Cross beams

NOTE: All steel (except G-bars) to be plain round. G-bars to be square. All bars will be plain and of structural grade. Dimensions are on center line of bars.

REQUIRED: 12 steel plates 15 1/2" x 1/4" x 1/4"
12 phosphor bronze plates 9" x 3/4" x 0.015"
8 steel plates 15" x 1/4" x 1/4"



MAINE HIGHWAY COMMISSION
BRIDGE DIVISION
BEAR RIVER BRIDGE
IN THE TOWN OF
NEWRY
OXFORD COUNTY
SUPERSTRUCTURE
Sheet 3 of 3 August, 1929

11-103

0 1 2 3 4 5 INCHES